

Ledlink..... create more

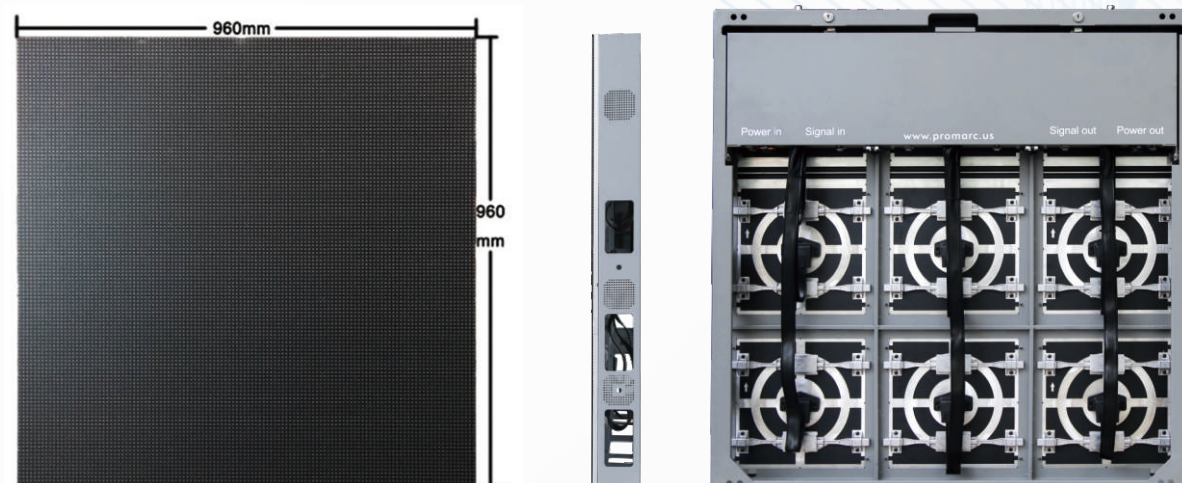
SHENZHEN LEDLINK TECHNOLOGY CO.,LTD
PROFESSIONAL LED DISPLAY MANUFACTURE

Phone:86-755-23007021
Email:info@szledlink.com www.szledlink.com
ADD:4th floor build B hengchao industry tangtou rd No208 shiyan town bao an
district shenzhen china,518103.

EN1-series

P4 | P5.33 | P6.668 | P8 | P10

Iron standard waterproof cabinet
Application: outdoor fixinstalltion



Features

- Energy saving
drivingIC ICN2049,common cathode led lamps makes the screen can save up to 35% on energy requiements ,The integration of LED and IC together with the multi-circuit structure, achieves evenly-distributed current on power consumptionand fast cooling.
- high brightness,the common cathode lamps encapsulation way makes the screen could rive high brightness with low heat,so the screen can be use longer time.
- high grey level
PWM chips are adopted to improve the gray levels. 16bits gratlevel can be reached.
The dedicated 14bit constant currenting IC of high gray scale and the ghost-abating circuit can protect the LEDs well as avoid surge and leakage
- Large viewing angle and smooth displaying provide excellent visual effect from every
- IP65 rating ensures stable operation in severe weather
- Ultra-high brightness, low attenuation, high reliability and weather ability.
- Good unifrmty of color rmakes the display effect without coarseness and mosaic.



DESCRIPTION	SPECIFICATION					UNITS
RESOLUTION PRODUCT PITCH	P4	P5.33	P6.667	P8	P10	
BRIGHTNESS	≥5000	≥5500	≥6000	≥6000	≥6000	cd
REFRESH RATE	1920	1920	1920	1920	1920	hz
SERVICEABILITY	Rear&Front	Rear&Front	Rear&Front	Rear&Front	Rear&Front	
SCAN CONFIGURATION	1/10	1/8	1/6	1/5	1/2	scan
DRIVER IC	ICN2049	ICN2049	ICN2049	ICN2049	ICN2049	
LED TYPE	SMD1921	SMD1921	SMD2727	SMD2727/3535	SMD3535	
MODULE SIZE	320*320	320*320	320*320	320*320	320*320	MM
MODULE RESOLUTION	80*80	60*60	48*48	40*40	32*32	DOTS
CABINET SIZE (W×H×D)	960*960	960*960	960*960	960*960	960*960	MM
CONSTRUCTION MATERIAL	IRON&ALU	IRON&ALU	IRON&ALU	IRON&ALU	IRON&ALU	
CABINET CONFIGURATION	3*3	3*3	3*3	3*3	3*3	MODULES
CABINET RESOLUTION	240*240	180*180	144*144	120*120	96*96	DOTS
CABINET WEIGHT	55	55	55	55	55	KG
VIEWING ANGLE (50%BRIGHTNESS)	160 Horizontal, 140 Vertical	160 Horizontal, 140 Vertical	160 Horizontal, 140 Vertical	160 Horizontal, 140 Vertical	160 Horizontal, 140 Vertical	
CERTIFICATIONS	CE,RoHS,CCC	CE,RoHS,CCC	CE,RoHS,CCC	CE,RoHS,CCC	CE,RoHS,CCC	
OPERATING POWER VOLTAGE	90-240	90-240	90-240	90-240	90-240	Volts
OPERATING POWER FREQUENCY	50-60	50-60	50-60	50-60	50-60	HZ
POWER CONSUMPTION	600	530	520	500	510	
OPERATING TEMPERATURE	-20 min / +45 max	-20 min / +45 max	-20 min / +45 max	-20 min / +45 max	-20 min / +45 max	°C
STORAGE TEMPERATURE	-20 min / +60 max	-20 min / +60 max	-20 min / +60 max	-20 min / +60 max	-20 min / +60 max	°C
OPERATING HUMIDITY	20% min / 70% max	20% min / 70% max	20% min / 70%	20% min / 70%	20% min / 70% max	
STORAGE HUMIDITY	30% min / 85% max	30% min / 85% max	30% min / 85%	30% min / 85%	30% min / 85% max	
NOMINAL LED WORK LIFE (50%BRIGHTNESS)	100000	100000	100000	100000	100000	HOURS
VIDEO INPUT	DVI/HDMI	DVI/HDMI	DVI/HDMI	DVI/HDMI	DVI/HDMI	
PROTECTION LEVEL	REAR IP54, FRONT Ip65	REAR IP54, FRONT Ip65	REAR IP54, FRONT Ip65	REAR IP54, FRONT Ip65	REAR IP54, FRONT Ip65	
DISPLAY RESOLUTION	62500	35200	22477	15625	10000	Pixels/□
S/W BRIGHTNESS CONTROL	256 steps Auto or manual	256 steps Auto or manual	256 steps Auto or manual	256 steps Auto or manual	256 steps Auto or manual	
GREY SCALE RESOLUTION	16-bit	16-bit	16-bit	16-bit	16-bit	

Small pixel-series

P1.25 | P1.5625 | P1.875 | P2.5

Alu die-casting cabinet

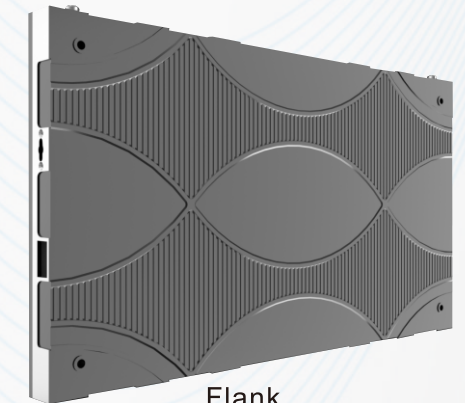
Application:indoor fixinstalltion



Features

- Quality black LED lamps masks make pictures clearer and more colorful.
- The most advanced S-PWN driving technology offers low driving current, high gray scaleand fresh rate.
- 14 Bit gray scale achieve great performance when brightness reduced to 20%.
- LED with low power consumption and PFC power supplies with 4.2v working voltage willsave over 15% energy compared with traditional products.
- Redundancy backup of signals and connectors and double backup for circuits improve thescreen stability greatly.
- 3840Hz refresh rate ensures pictures without waves, flickers or shake. And the front service ability and cable-free design of modules ensure easy disassembly.
- Cabinet can be attached to the wall to ensure wholly front serviceability.

Magnetic absorption structure, convenient and quick



Flank

DESCRIPTION	SPECIFICATION				UNITS
RESOLUTION PRODUCT PITCH	P1.25	P1.5625	P1.875	P2.5	
BRIGHTNESS	≥500-800	≥500-800	≥500-800	≥500-800	cd
REFRESH RATE	3840	3840	3840	3840	hz
SERVICEABILITY	Front	Front	Front	Front	
SCAN CONFIGURATION	1/30	1/32	1/30	1/30	scan
DRIVER IC	ICN2055 or other	ICN2055 or other	ICN2055 or other	ICN2055 or other	
LED TYPE	SMD1010	SMD1010	SMD1010	SMD1010/2121	
MODULE SIZE	150*168.75	150*168.75	150*168.75	150*168.75	MM
MODULE RESOLUTION	120*135	96*108	80*180	60*135	DOTS
CABINET SIZE (W×H)	600*337.5	600*337.5	600*337.5	600*337.5	MM
CONSTRUCTION MATERIAL	die-casting Alu	die-casting Alu	die-casting Alu	die-casting Alu	
CABINET CONFIGURATION	4*2	4*2	4*2	4*2	MODULES
CABINET RESOLUTION	480*270	384*216	320*180	240*135	DOTS
CABINET WEIGHT	6	6	6	6	KG
VIEWING ANGLE (50%BRIGHTNESS)	160 Horizontal, 140 Vertical	160 Horizontal, 140 Vertical	160 Horizontal, 140 Vertical	160 Horizontal, 140 Vertical	
CERTIFICATIONS	CE,RoHS,CCC	CE,RoHS,CCC	CE,RoHS,CCC	CE,RoHS,CCC	
OPERATING POWER VOLTAGE	90-240	90-240	90-240	90-240	Volts
OPERATING POWER FREQUENCY	50-60	50-60	50-60	50-60	HZ
POWER CONSUMPTION					
OPERATING TEMPERATURE	-20 min / +45 max	-20 min / +45 max	-20 min / +45 max	-20 min / +45 max	° C
STORAGE TEMPERATURE	-20 min / +60 max	-20 min / +60 max	-20 min / +60 max	-20 min / +60 max	° C
OPERATING HUMIDITY	20% min / 70% max	20% min / 70% max	20% min / 70% max	20% min / 70% max	
STORAGE HUMIDITY	30% min / 85% max	30% min / 85% max	30% min / 85% max	30% min / 85% max	
NOMINAL LED WORK LIFE (50%BRIGHTNESS)	100000	100000	100000	100000	HOURS
VIDEO INPUT	DVI/HDMI	DVI/HDMI	DVI/HDMI	DVI/HDMI	
PROTECTION LEVEL	REAR IP45,FRONT Ip54	REAR IP45,FRONT Ip54	REAR IP45,FRONT Ip54	REAR IP45,FRONT Ip54	
DISPLAY RESOLUTION	640000	409600	284444	160000	Pixels/ m ²
S/W BRIGHTNESS CONTROL	256 steps Auto or manual	256 steps Auto or manual	256 steps Auto or manual	256 steps Auto or manual	
GREY SCALE RESOLUTION	16-bit	16-bit	16-bit	16-bit	



FB-series

P2.9 | P3.9 | P4.8

Alu die-casting waterproof cabinet

Application: outdoor renta



Features

- Exclusive black matte technology of module masks can improve screen contrast ratio better. Patented linear arrangement of LED dies and in-diffusion cone design greatly improve the contrast ratio.
- Ics driven by constant current, with pre-charged function can remove ghost image and make pictures clear without trailing.
- Double backup for module power interfaces can let the display not be affected when input pins.
- Cabinet uses magnesium to achieve high precision, light weight and good dissipation. High-precision locking system can avoid cabinet mismatch.
- The shiny metal paint finish makes it look high-end and luxurious.
- The Ip65 rating meets the needs of various outdoor environment.

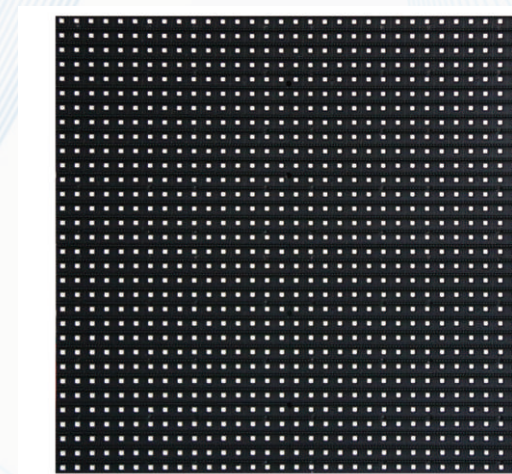
Details



Lock



Connectors



Positive



Flank

DESCRIPTION	SPECIFICATION			UNITS
RESOLUTION PRODUCT PITCH	P2.9	P3.91	P4.81	
BRIGHTNESS	≥4000	≥4000	≥4000	cd
REFRESH RATE	1920	1920	1920	hz
SERVICEABILITY	Front	Front	Front	
SCAN CONFIGURATION	1/28	1/16	1/13	scan
DRIVER IC	ICN2055 or other	ICN2055 or other	ICN2055 or other	
LED TYPE	SMD1415	SMD1921	SMD1921	
MODULE SIZE	250*250	250*250	250*250	MM
MODULE RESOLUTION	86*86	64*64	52*52	DOTS
CABINET SIZE (W×H)	600*337.5	600*337.5	600*337.5	MM
CONSTRUCTION MATERIAL	die-casting Alu	die-casting Alu	die-casting Alu	
CABINET CONFIGURATION	2*2	2*2	2*2	MODULES
CABINET RESOLUTION	172*172	128*128	104*104	DOTS
CABINET WEIGHT	10	10	10	KG
VIEWING ANGLE (50%BRIGHTNESS)	160 Horizontal, 140 Vertical	160 Horizontal, 140 Vertical	160 Horizontal, 140 Vertical	
CERTIFICATIONS	CE,RoHS,CCC	CE,RoHS,CCC	CE,RoHS,CCC	
OPERATING POWER VOLTAGE	90-240	90-240	90-240	Volts
OPERATING POWER FREQUENCY	50-60	50-60	50-60	HZ
POWER CONSUMPTION				
OPERATING TEMPERATURE	-20 min / +45 max	-20 min / +45 max	-20 min / +45 max	° C
STORAGE TEMPERATURE	-20 min / +60 max	-20 min / +60 max	-20 min / +60 max	° C
OPERATING HUMIDITY	20% min / 70% max	20% min / 70% max	20% min / 70% max	
STORAGE HUMIDITY	30% min / 85% max	30% min / 85% max	30% min / 85% max	
NOMINAL LED WORK LIFE (50%BRIGHTNESS)	100000	100000	100000	HOURS
VIDEO INPUT	DVI/HDMI	DVI/HDMI	DVI/HDMI	
PROTECTION LEVEL	REAR IP54,FRONT Ip65	REAR IP54,FRONT Ip65	REAR IP54,FRONT Ip65	
DISPLAY RESOLUTION	112896	65410	43222	Pixels/㎡
S/W BRIGHTNESS CONTROL	256 steps Auto or manual	256 steps Auto or manual	256 steps Auto or manual	
GREY SCALE RESOLUTION	14-bit	14-bit	14-bit	

Floor screen-series

P2.9 | P3.9 | P5.2 | P8 | P10

Iron standard waterproof cabinet
Application: outdoor fix installation



Connectors

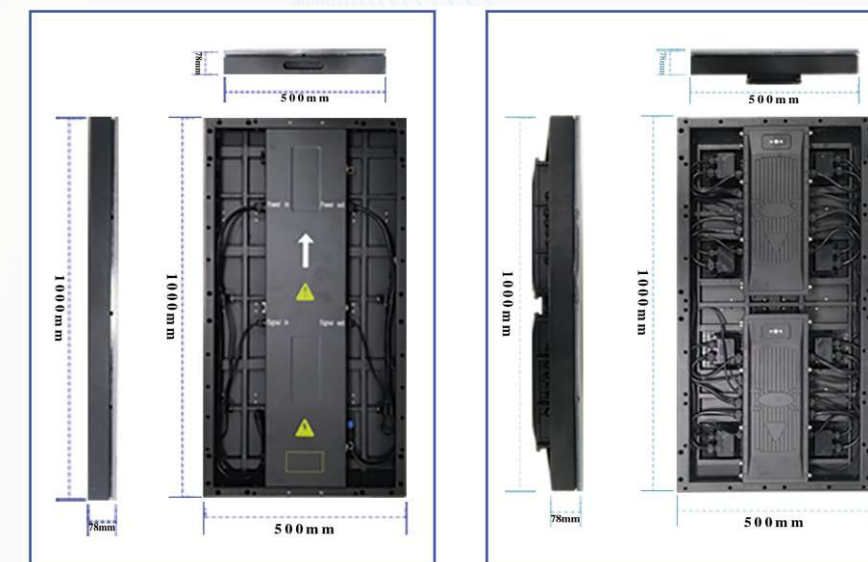
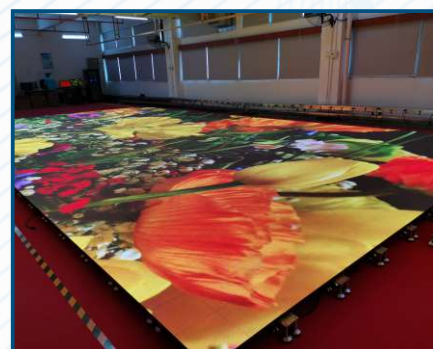
Features

- LED intelligent interactive floor screen is a digital display device that is customized for indoor and outdoor exhibition halls and special background environments.
- It uses the most advanced optical sensing technology in China to perceive human movements and accurately capture the LED floor screen to capture movement.
- The object changes to achieve the effect of the stage.
- The most advanced planar antenna technology on the market is used to make it also equipped with intelligent sensing technology, making the experience truly immersive.



- The bottom shell, housing, power cord and signal line of the LED intelligent interactive floor screen module are specially designed and equipped with waterproof and moisture proof materials.
- They are made of raw materials with low moisture absorption coefficient.
- After multiple sealing treatments, they are waterproof and moisture-proof.
- Function, the front and back of the cabinet can reach IP68 waterproof level.

- LED intelligent interactive floor screen housing is made of imported PC material, which has high wear resistance and flexibility, and good high and low temperature resistance.



DESCRIPTION	SPECIFICATION				UNITS
RESOLUTION PRODUCT PITCH	P2.976	P3.91	P5.2	P2.976	
BRIGHTNESS	≥2000-2500	≥2000-2500	≥2000-2500	≥2000-2500	cd
REFRESH RATE	1920	1920	1920	1920	hz
SERVICEABILITY	Front	Front	Front	Front	
SCAN CONFIGURATION	1/14	1/16	1/6	1/10	scan
DRIVER IC	ICN2038 or other	ICN2038 or other	ICN2038 or other	ICN2038 or other	
LED TYPE	SMD1415	SMD1921	SMD1921	SMD1921	
MODULE SIZE	250*250	250*250	250*250	250*250	MM
MODULE RESOLUTION	84*84	64*64	48*48	40*40	DOTS
CABINET SIZE (W×H)	500*1000	500*1000	500*1000	500*1000	MM
CONSTRUCTION MATERIAL	die-casting Alu	die-casting Alu	die-casting Alu	die-casting Alu	
CABINET CONFIGURATION	2*4	2*4	2*4	2*4	MODULES
CABINET RESOLUTION	168*336	128*256	96*192	80*160	DOTS
CABINET WEIGHT	19.8	19.8	19.8	19.8	KG
VIEWING ANGLE (50%BRIGHTNESS)	160 Horizontal, 140 Vertical	160 Horizontal, 140 Vertical	160 Horizontal, 140 Vertical	160 Horizontal, 140 Vertical	
CERTIFICATIONS	CE, RoHS, CCC	CE, RoHS, CCC	CE, RoHS, CCC	CE, RoHS, CCC	
OPERATING POWER VOLTAGE	90-240	90-240	90-240	90-240	Volts
OPERATING POWER FREQUENCY	50-60	50-60	50-60	50-60	HZ
POWER CONSUMPTION	800/max 400/average	800/max 400/average	800/max 400/average	800/max 400/average	
OPERATING TEMPERATURE	-20 min / +45 max	-20 min / +45 max	400w/㎡ average	-20 min / +45 max	° C
STORAGE TEMPERATURE	-20 min / +60 max	-20 min / +60 max	-20 min / +60 max	-20 min / +60 max	° C
OPERATING HUMIDITY	20% min / 70% max	20% min / 70% max	20% min / 70% max	20% min / 70% max	
STORAGE HUMIDITY	30% min / 85% max	30% min / 85% max	30% min / 85% max	30% min / 85% max	
NOMINAL LED WORK LIFE (50%BRIGHTNESS)	100000	100000	100000	100000	HOURS
VIDEO INPUT	DVI/HDMI	DVI/HDMI	DVI/HDMI	DVI/HDMI	
PROTECTION LEVEL	REAR IP45, FRONT Ip54	REAR IP45, FRONT Ip54	REAR IP45, FRONT Ip54	REAR IP45, FRONT Ip54	
DISPLAY RESOLUTION	112896	409600	284444	160000	Pixels/㎡
S/W BRIGHTNESS CONTROL	256 steps Auto or manual	256 steps Auto or manual	256 steps Auto or manual	256 steps Auto or manual	
GREY SCALE RESOLUTION	14-bit	14-bit	14-bit	14-bit	

EF-series

Iron standard waterproof cabinet
Application:outdoor fixinstalltion

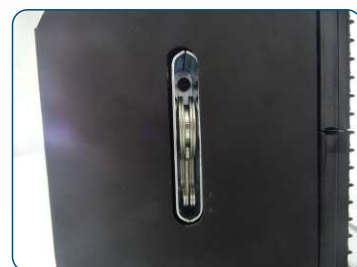


Features

- Polymer soft cover to prevents from collosion
- Magnesium alloy cabinet, well ventilation, anti collision
- Seamless stitching for better display.
- Frame angle can be adjusted.



Details



Lock



Connectors

Case



DESCRIPTION	SPECIFICATION	UNITS
RESOLUTION PRODUCT PITCH	P10	
BRIGHTNESS	≥6000	cd
REFRESH RATE	1920	hz
SERVICEABILITY	Front	
SCAN CONFIGURATION	1/2	scan
DRIVER IC	ICN2055 or other	
LED TYPE	SMD3535	
MODULE SIZE	320*320	MM
MODULE RESOLUTION	32*32	DOTS
CABINET SIZE (W×H)	960*960	MM
CONSTRUCTION MATERIAL	die-casting Alu/iron/Alu	
CABINET CONFIGURATION	3*3	MODULES
CABINET RESOLUTION	96*96	DOTS
CABINET WEIGHT	65	KG
VIEWING ANGLE(50%BRIGHTNESS)	160 Horizontal, 140 Vertical	
CERTIFICATIONS	CE,RoHS,CCC	
OPERATING POWER VOLTAGE	90-240	Volts
OPERATING POWER FREQUENCY	50-60	HZ
POWER CONSUMPTION		
OPERATING TEMPERATURE	-20 min / +45 max	° C
STORAGE TEMPERATURE	-20 min / +60 max	° C
OPERATING HUMIDITY	20% min / 70% max	
STORAGE HUMIDITY	30% min / 85% max	
NOMINAL LED WORK LIFE (50%BRIGHTNESS)	100000	
VIDEO INPUT	DVI/HDMI	
PROTECTION LEVEL	REAR IP45,FRONT Ip54	
DISPLAY RESOLUTION	10000	Pixels/ m²
S/W BRIGHTNESS CONTROL	256 steps Auto or manual	
GREY SCALE RESOLUTION	14-bit	

Crystal sceen

P3.9

- P3.91-7.81 full-color high-pass LED display, a new generation of LED display products. It can ensure the color richness and display details of the dynamic picture without affecting the lighting and aesthetics of the installation position.
- It is designed with a cabinet size of 1000X500, and can be spliced out of any shape in any direction and any size. At the same time, the standard display size design makes the displayed picture uncompressed, clear and true, showing perfect visual effect, simple installation, bright color, and has become the preferred LED display product for glass window! Creative and leading the trend!



Product features



High transparency
transparency >60%



HD
High pixel density with
resolution up to 1080P



High contrast
Contrast up to 5000:1



High refresh
Refresh rate ≥3840HZ



Adjustable brightness
Wide range of brightness adjustment to meet the
needs of various environments



High gray level
Gray level depth of 14-16bits



Intelligent
Mobile phone, tablet wireless
connection, video, picture text multiple interaction



Ultra-wide viewing angle
Horizontal viewing angle up to 120°
and vertical viewing angle up to 120°



Ultra-thin, ultra-light
Made of die-cast aluminum, ultra-thin design,
weighing only 12kg/m2



Installation and maintenance
Modular box splicing installation,
easy maintenance, light strip can be
taken directly from the front



Seamless stitching
High-precision equipment processing,
good flatness, accurate size,
real seamless stitching



Extremely quiet
Ultra-quiet power supply,
voice can be ignored



Ultra-wide viewing angle
Horizontal viewing angle up to 120°
and vertical viewing angle up to 120°



Case



P3.91-7.81	
Pixel Pitch (mm)	3.91mm-7.81mm
LED Package	Nationstar 1921
Driving IC	High refresh ICN2153
Physical density	32768PX/m²
Drive mode	Constant current drive IC
Brightness(cd/m²)	5300cd/m²
Transparency	70%
Gray level	65536 (15bit)
Refresh rate (hz)	≥3000hz
PCB board	6 layers, 2.0 thickness, shengyi
Connector	3M Gold plating
Waterproof level	Ip33
Bright adjustment	256 level
Perspective	120°
Viewing distance (m)	≥4M
Power Demand	220V±10%; AC50HZ
Average power (w)	220W/m²
Max power (w)	800W/m²
Box size (mm)	1000mm*500mm*75mm
Weight (kg/ m²)	12kg
Installation method	Hoisting, fixed installation
Maintenance method	Front maintenance
Protection level	Indoor, easy to waterproof
Life Span (h)	≥100000小时
Using Environment	-10℃ ~+40℃ ; 15% ~90%RH

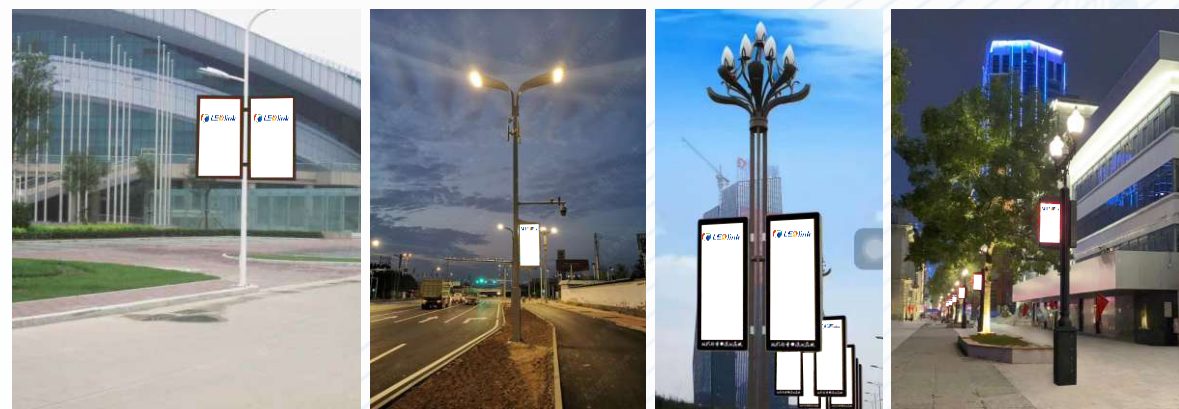
EF-series



Features



- Intelligent control by 3G/Wifi/LAN.
- Fluted design of the side open and unique rear cover make it to assemble.
- Front-service module make easy maintenance and cost-effective.
- High degree of protection-Full-waterproof(IP67) of the front and back , can work in any weather condition .
- Super heat dissipation and ventiated with fan inside and grid design in the bottom side .
- Best solution for Smart City Terminal high resolution outdoor light pole LED AD display screen are more commonly used for DOOH advertisements and promotions!
- Usually installed on shree light pole , these are most attractive because of vivid color and eye-catching design .
- Wideiy used on roat , tourist attraction and mant more putdoor .
- Street light pole LED Slgn screen make a GREAT Visual impact !



Company profile

Ledlink located in tangtou RD NO208 shiyan town shenzhen china.with the production and management area 4000㎡.ledlink focuses on the R&D, production, sales and service of LED full color display, and provide full-service of product solutions.

Now the products have been sold to over 120 countries and regions, America ,Europe and Asia,Australia and africa and so on. The product is widely use in like advertisement (advertising board,outdoor bigscreen,transportation,street,digital signage,sports field),stage application(enterprise events,public events,amusement eventsand TV show),commercial applications(chain shops,commercial complex,theme park, exhibition,church,ferry,casino..ect) Data visualization (controlling room,conference room,TV studio ect).

Mission:Putting soul into our product by innovation, letting product qualities create value for customers, benefiting customers, society and staff by excellent engineering and quality service.

